



**vertecotech**<sup>®</sup>

WE PRESERVE, COMPENSATE, AND CREATE THE FUTURE

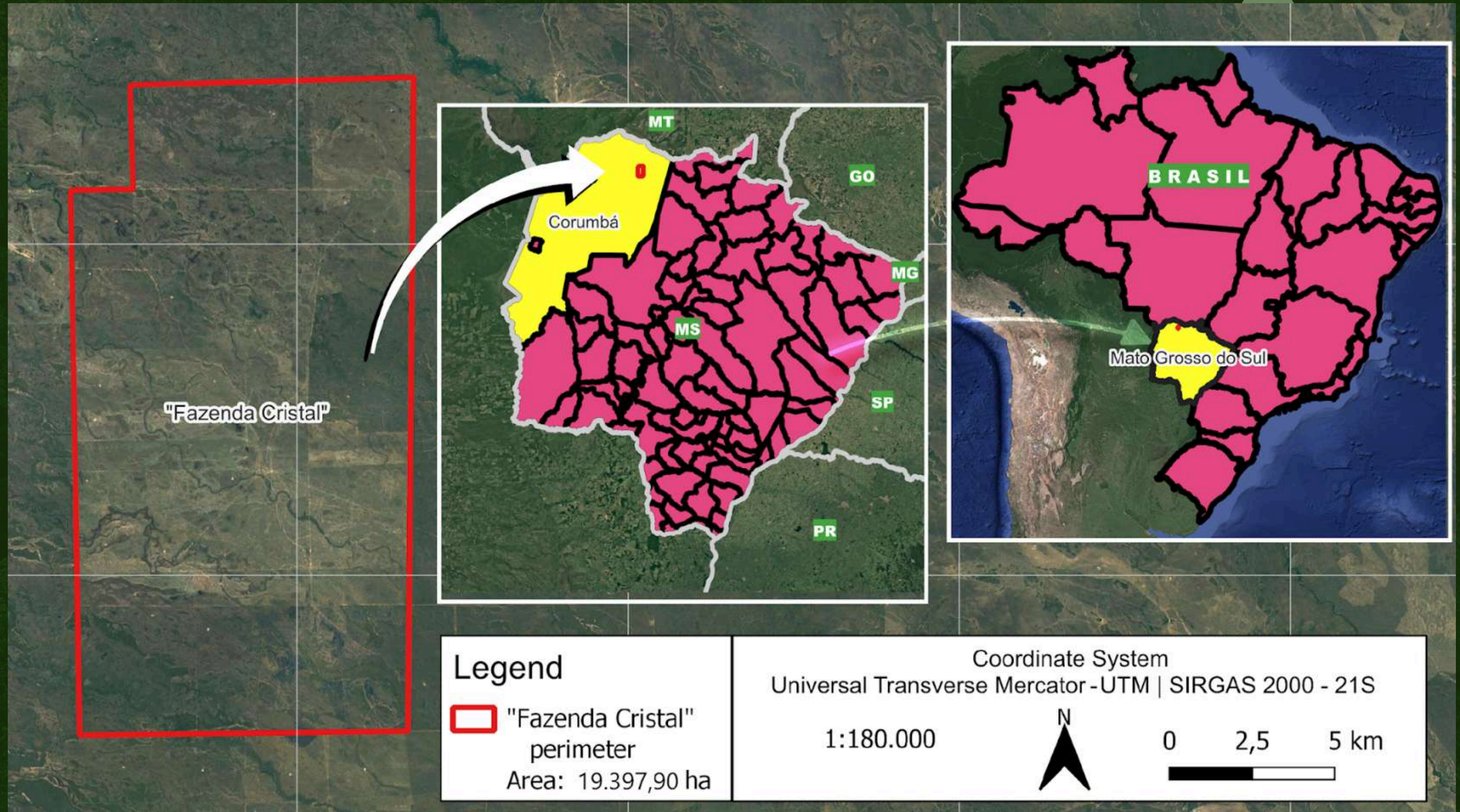
FAZENDA CRISTAL

CORUMBÁ, MATO GROSSO DO SUL, BRAZIL



VERT ECOTECH

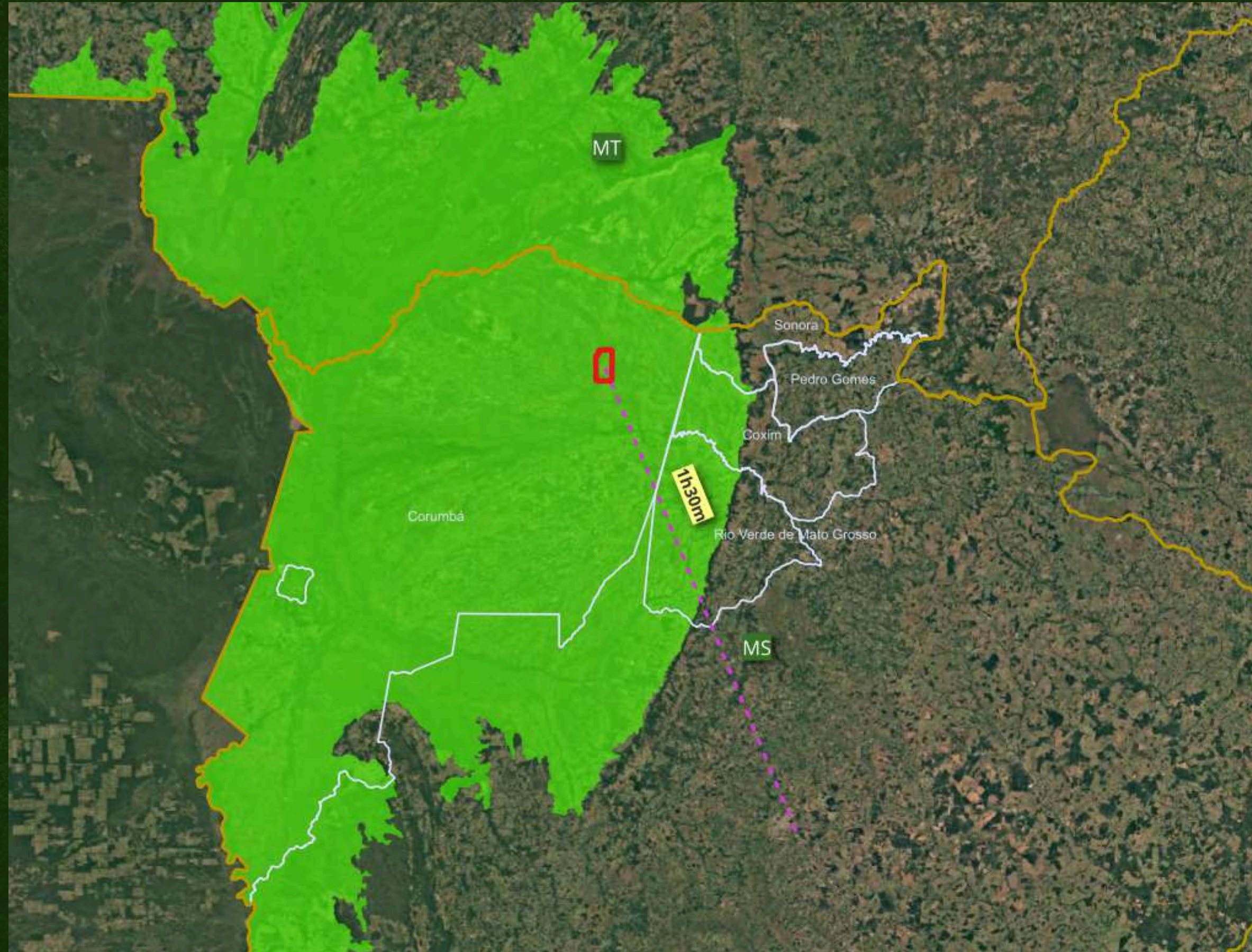
# Fazenda Cristal Conservation and Carbon Removal





VERT ECOTECH

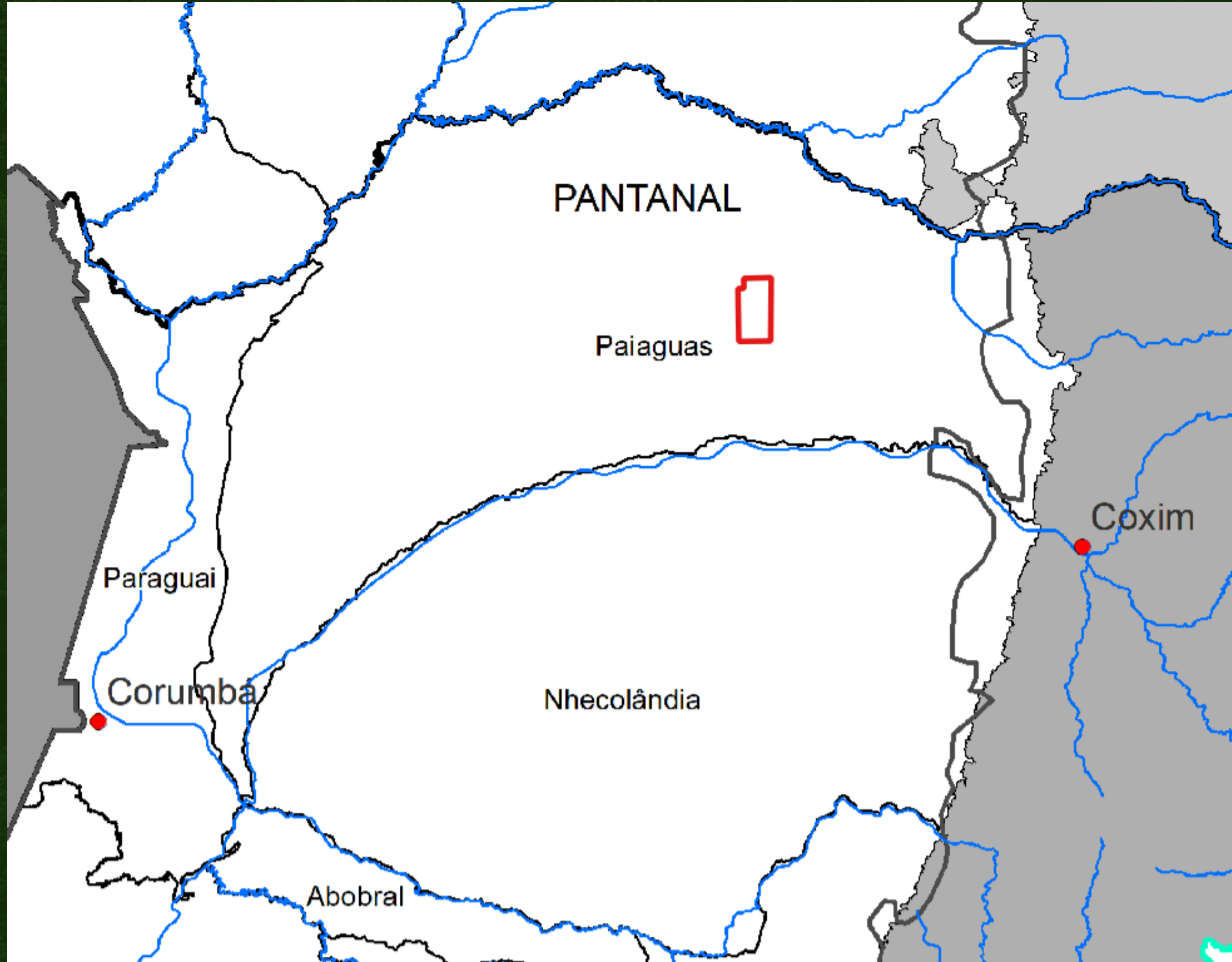
# Fazenda Cristal Conservation and Carbon Removal





VERT ECOTECH

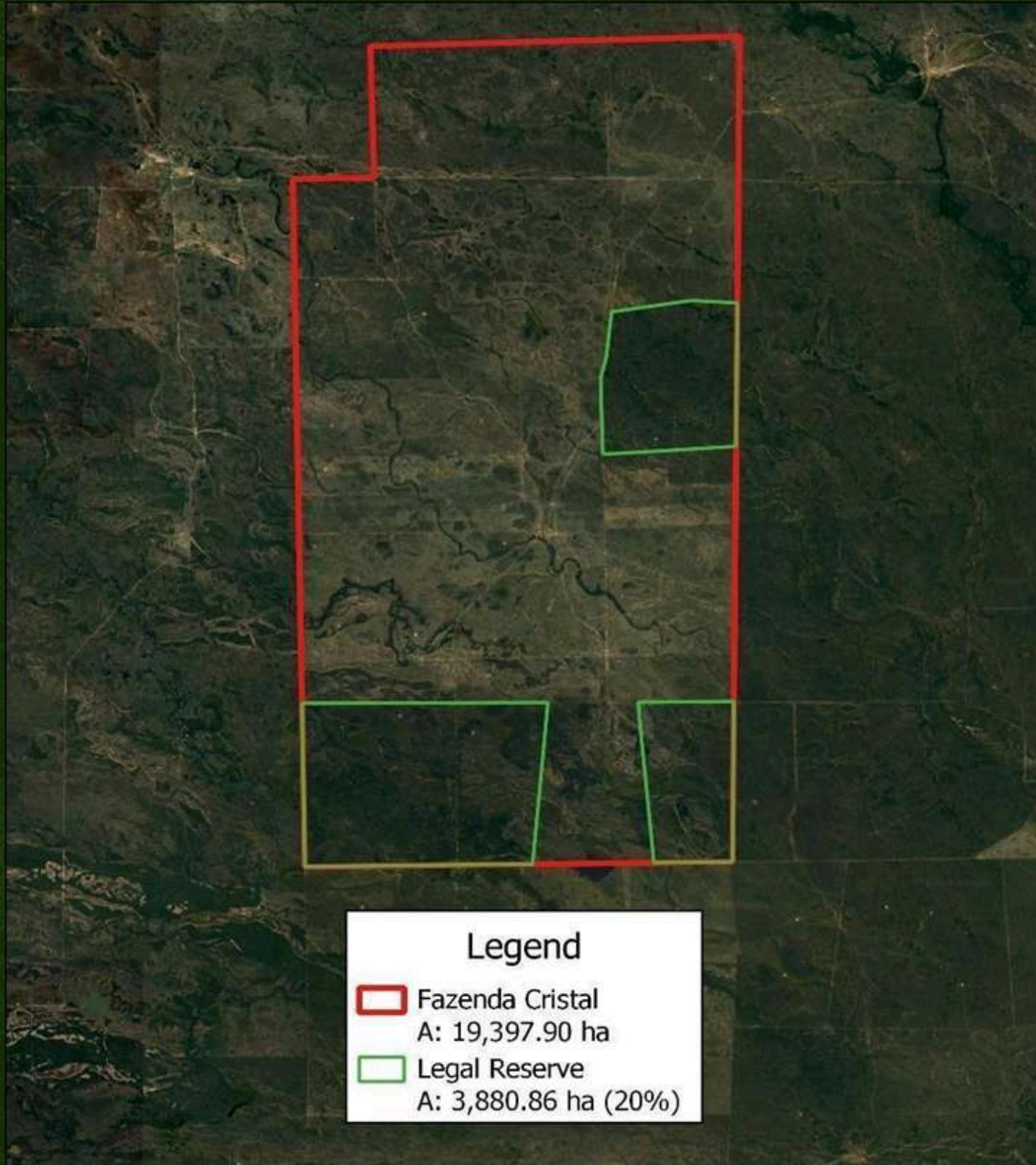
## Fazenda Cristal Conservation and Carbon Removal





VERT ECOTECH

# Fazenda Cristal Conservation and Carbon Removal



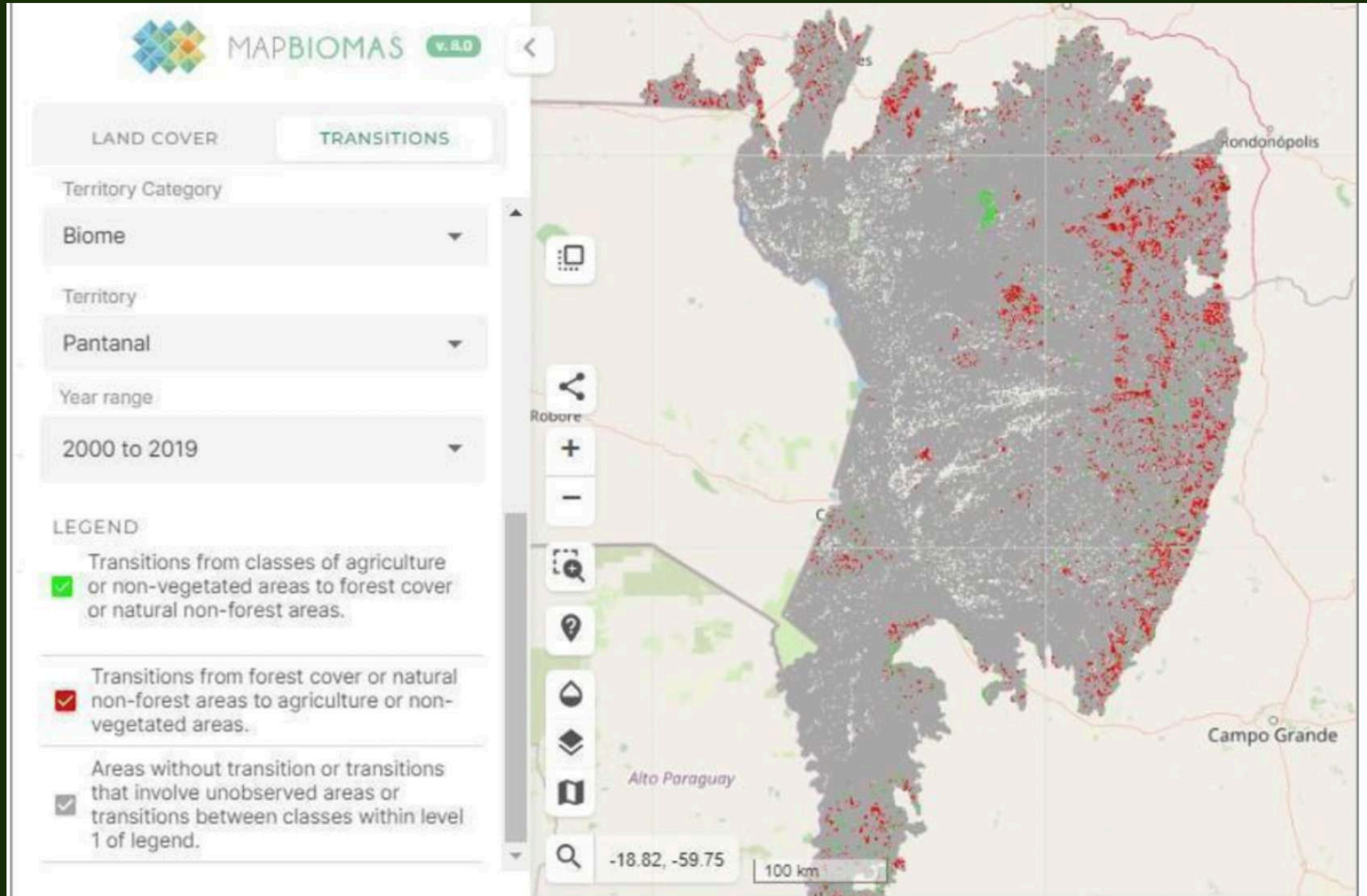


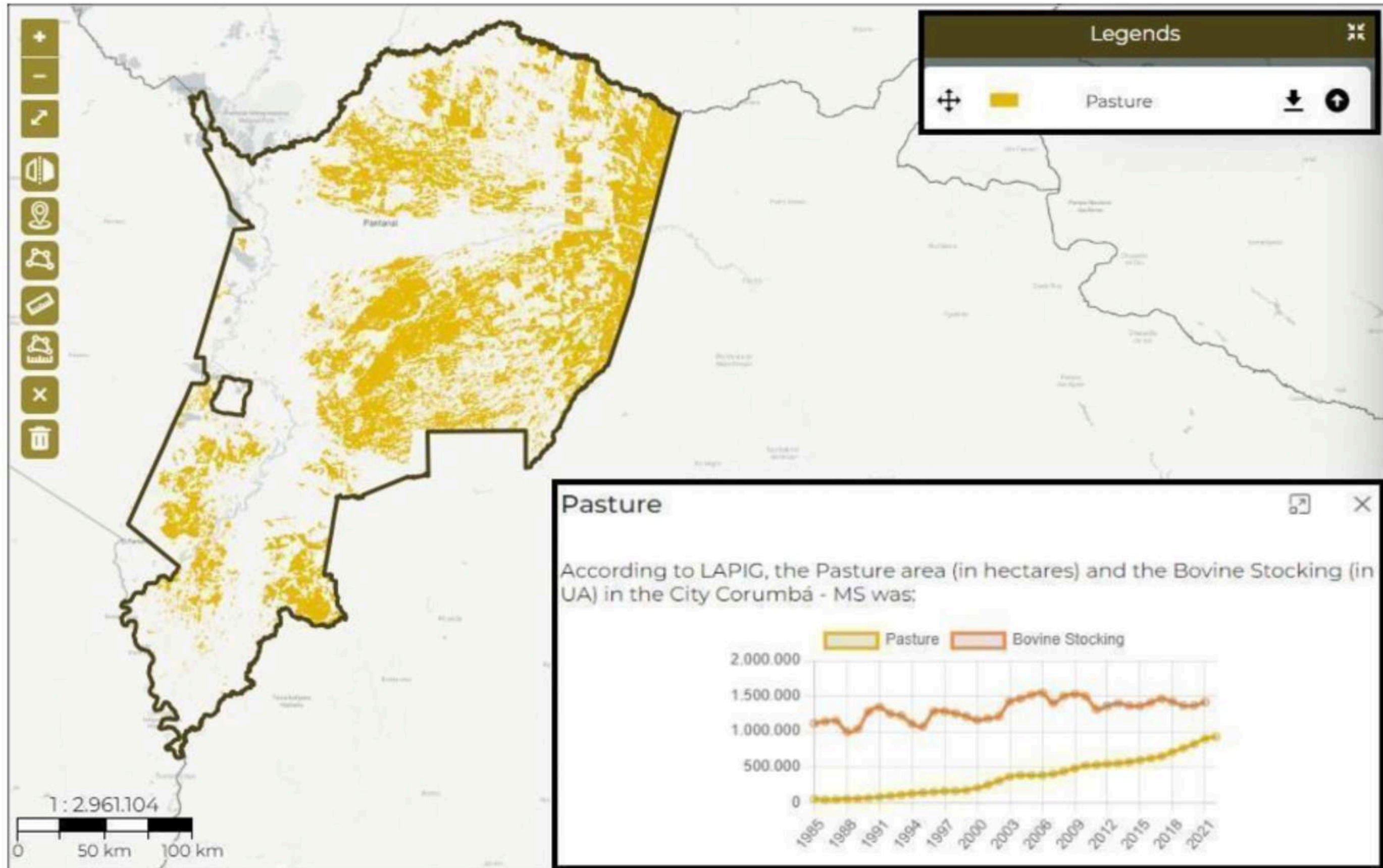
VERT ECOTECH

# CONTEXTUALISATION TO PANTANAL FARMS - BASELINE

- Wildfires and biodiversity loss;
- "Restrict" agricultural activities;
- Challenges related to the preservation of native areas (Legal Reserve);
- Scarcity of Payment for Environmental Services (PES);
- Lack of enforcement of Law 12.651/2012 (Forest Code) and others.



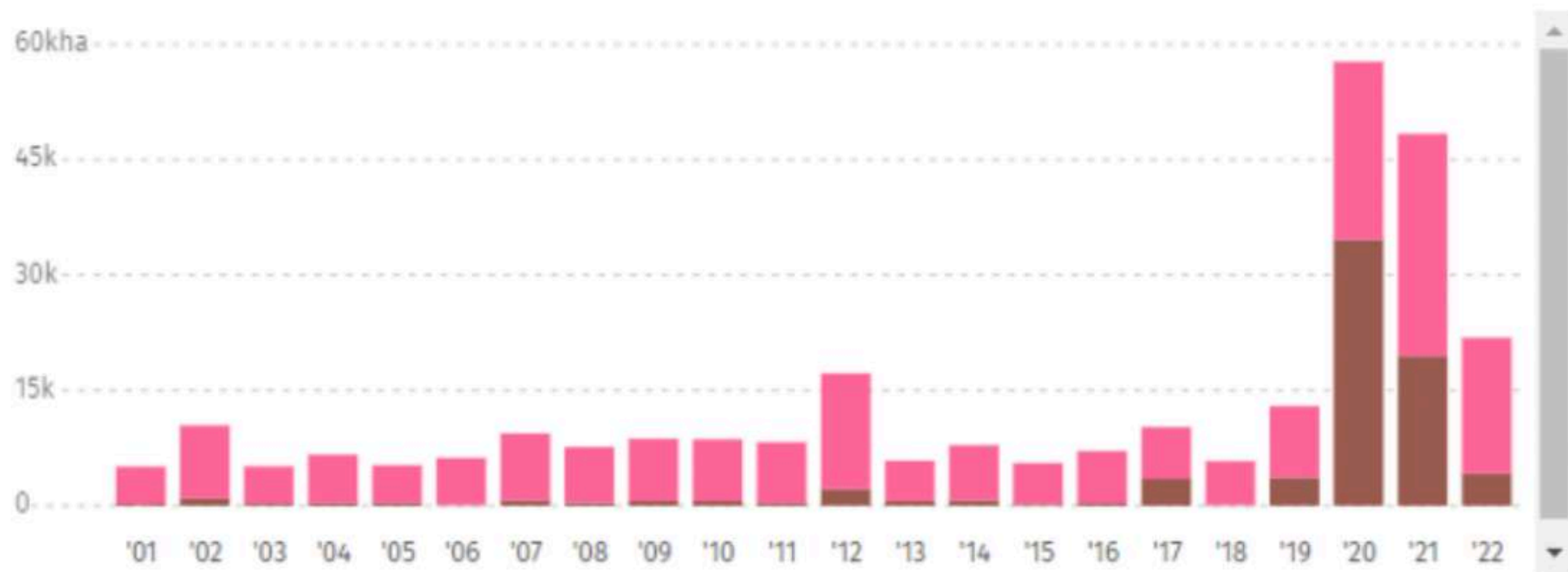




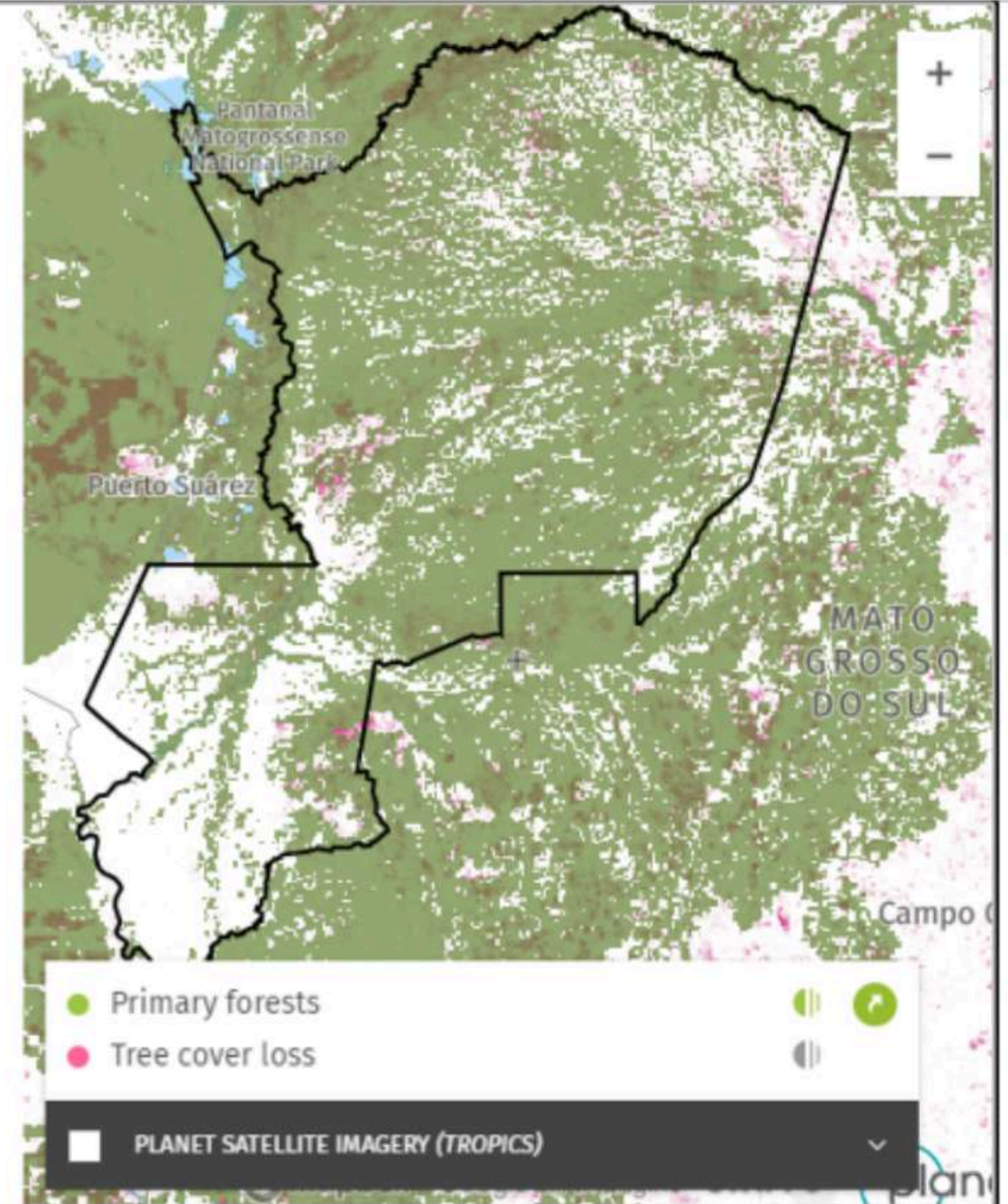
TREE COVER LOSS DUE TO FIRES IN CORUMBÁ, MATO GROSSO DO SUL, BRAZIL

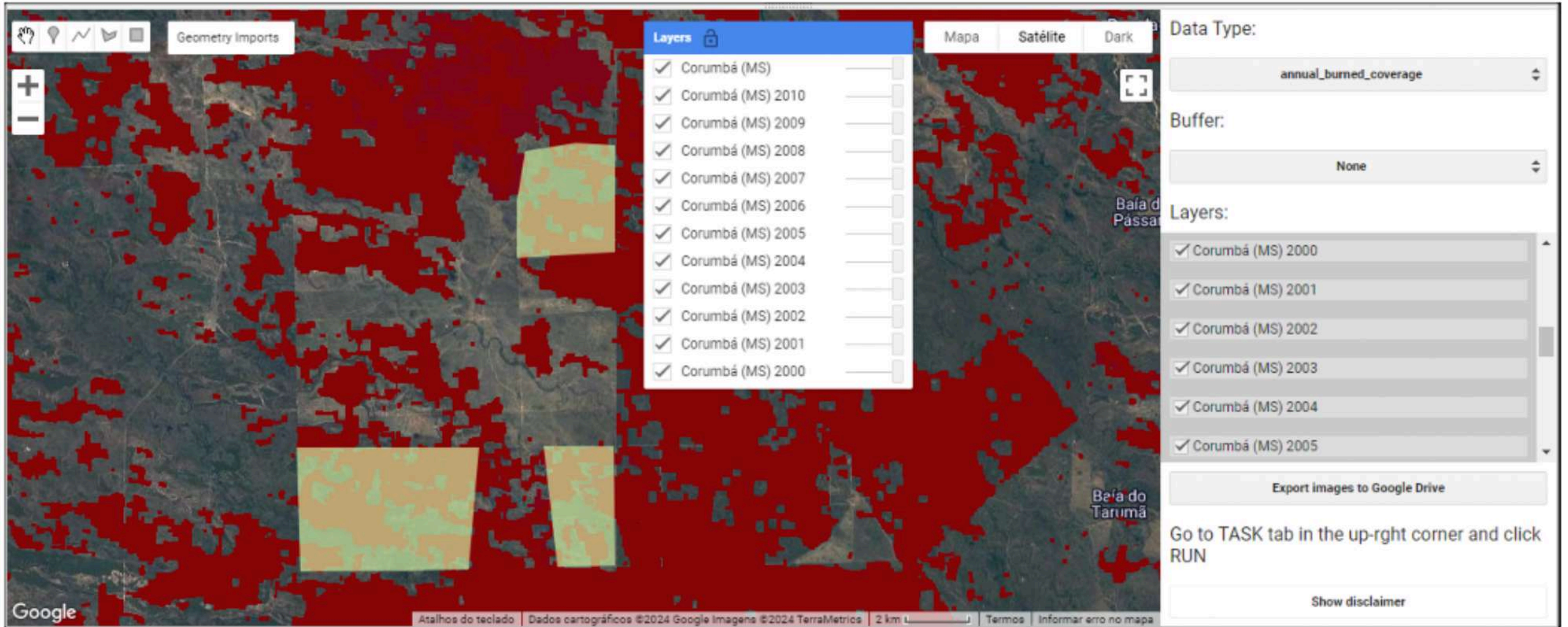


From **2001** to **2022**, **Corumbá** lost **74.5 kha** of tree cover from fires and **207 kha** from all other drivers of loss. The year with the most tree cover loss due to fires during this period was **2020** with **34.6 kha** lost to fires — **60%** of all tree cover loss for that year.



>30% tree canopy





The screenshot displays a web-based GIS application interface. The main map area shows a satellite view of a region with several semi-transparent colored overlays (red, orange, green) representing different data layers. The interface includes a top navigation bar with icons for home, location, layers, and geometry imports. A central 'Layers' panel lists various data layers for Corumbá (MS) from 2000 to 2010, all of which are checked. To the right, a settings panel allows for configuring the 'Data Type' (set to 'annual\_burned\_coverage') and 'Buffer' (set to 'None'). Below the settings, there is a 'Layers' list showing the years 2000 through 2005, all checked. At the bottom right, there is a button to 'Export images to Google Drive' and a text instruction: 'Go to TASK tab in the up-right corner and click RUN'. A 'Show disclaimer' button is also present at the bottom right. The bottom status bar includes the Google logo, keyboard shortcuts, copyright information for 2024, a scale bar (2 km), and links for terms and reporting errors.

Geometry Imports

Mapa Satélite Dark

Layers

- Corumbá (MS)
- Corumbá (MS) 2010
- Corumbá (MS) 2009
- Corumbá (MS) 2008
- Corumbá (MS) 2007
- Corumbá (MS) 2006
- Corumbá (MS) 2005
- Corumbá (MS) 2004
- Corumbá (MS) 2003
- Corumbá (MS) 2002
- Corumbá (MS) 2001
- Corumbá (MS) 2000

Data Type:

annual\_burned\_coverage

Buffer:

None

Layers:

- Corumbá (MS) 2000
- Corumbá (MS) 2001
- Corumbá (MS) 2002
- Corumbá (MS) 2003
- Corumbá (MS) 2004
- Corumbá (MS) 2005

Export images to Google Drive

Go to TASK tab in the up-right corner and click RUN

Show disclaimer

Google

Atalhos do teclado | Dados cartográficos ©2024 Google Imagens ©2024 TerraMetrics | 2 km | Termos | Informar erro no mapa



# CARBON CREDIT PROJECT - FAZENDA CRISTAL

VERT ECOTECH



## SOCIALCARBON STANDARD - CERTIFICATION BODY



Catalysing scalable nature-based solutions to mitigate climate change, enhance biodiversity, and support sustainable livelihoods, through high integrity standards and innovation.

### Accreditations



\*Pilot Phase

ICVCM - Pending

# SCM0003: METHODOLOGY FOR CARBON REMOVALS IN PRIVATE CONSERVATION AREAS

CATEGORY: AFOLU - AGRICULTURE, FORESTRY AND OTHER LAND USE

SCOPE: 14 - AFFORESTATION, REFORESTATION AND REVEGETATION (ARR)



## SCM0003: Methodology for Carbon Removal in Private Conservation Areas

[View Methodology](#)

**Sectoral Scope:** Scope 14 - Afforestation and reforestation

**Status:** Live since 08/02/2023

**Methodology Developer:** JFC Environmental Assets Ltda

**VVB Reviewer:** Earthood Services Private Limited

**Modules / Key Sources:**

- CDM AR-AMS0007. Afforestation and reforestation project activities implemented on lands other than wetlands, v3.1
- Brazil's Ministry of Science and Technology (MCTI). Third National Communication of Brazil to the United Nations Framework Convention on Climate Change. Volume III. Brasilia: Ministry of Science, Technology and Innovation, 2016.
- [Feasibility Assessment Tool](#)
- [VVB Checklist](#)
- [VVB Assessment of Methodology](#)



## PROJECT START DATE

VERT ECOTECH

Official project start: 16 May 2020 > invoices for products acquisition

- Activities related to greenhouse gas (GHG) maintenance

Agreements for adjustments and project submission for certification: 22 December 2022

> first contract with the landowner

- Enhancement of GHG-related activities and inclusion of actions and monitoring focused on social, human, biodiversity, financial, natural, and carbon aspects.



# PROJECT PERIOD AND MONITORING

VERT ECOTECH



Crediting period: 16 May 2020 > 15 May 2030.

- Renewable up to 100 years.

First monitoring (MR-1): 16 May 2020 > 31 December 2023.

- Issuance of 2020, 2021, 2022, and 2023.



## Fazenda Cristal Conservation Project 1<sup>st</sup> Monitoring Report



Document Prepared by Vert Ecotech S/A

<b>Project Title</b>	Fazenda Cristal Conservation Project
<b>Version</b>	1.6
<b>Project ID</b>	SOCIALCARBON-4
<b>Date of Issue</b>	31-January-2025
<b>Monitoring Period</b>	16-May-2020 to 31-December-2023
<b>SOCIALCARBON Standard Version</b>	6.1
<b>Prepared By</b>	Vert Ecotech S/A
<b>Contact</b>	Av. José Rocha Bomfim, 214 (room 214 – ed. Londres), Jardim Santa Genebra, Campinas, São Paulo, Brazil. +55 (19) 97406-1426 jardini@vertecotech.com www.vertecotech.com



# PROJECT ACTIVITIES

VERT ECOTECH



## Implementation and maintenance of firebreaks





# PROJECT ACTIVITIES

VERT ECOTECH

## Implementation and maintenance of firebreaks



Fence maintenance





Local monitoring



Local monitoring



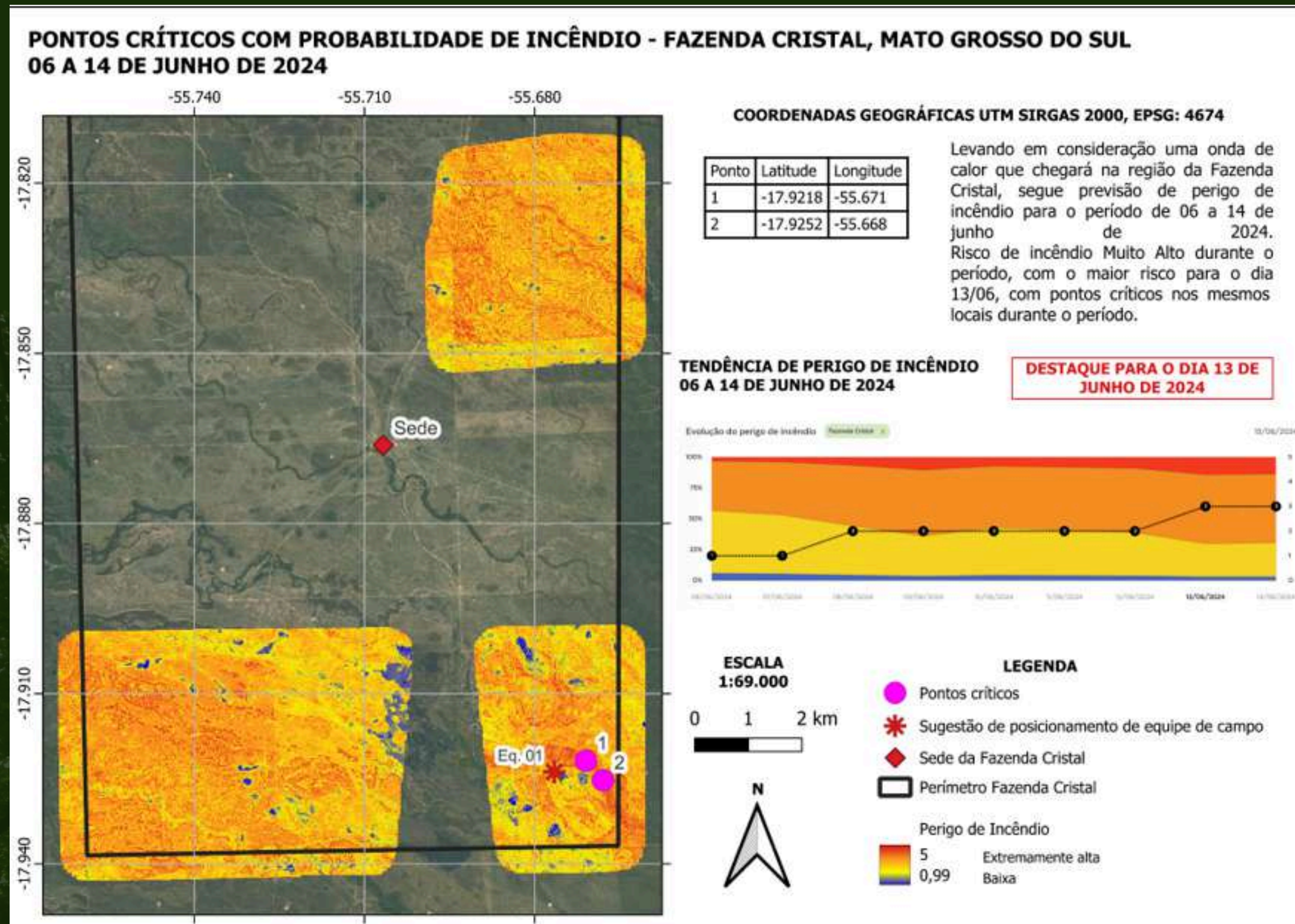
Local fire prevention measures



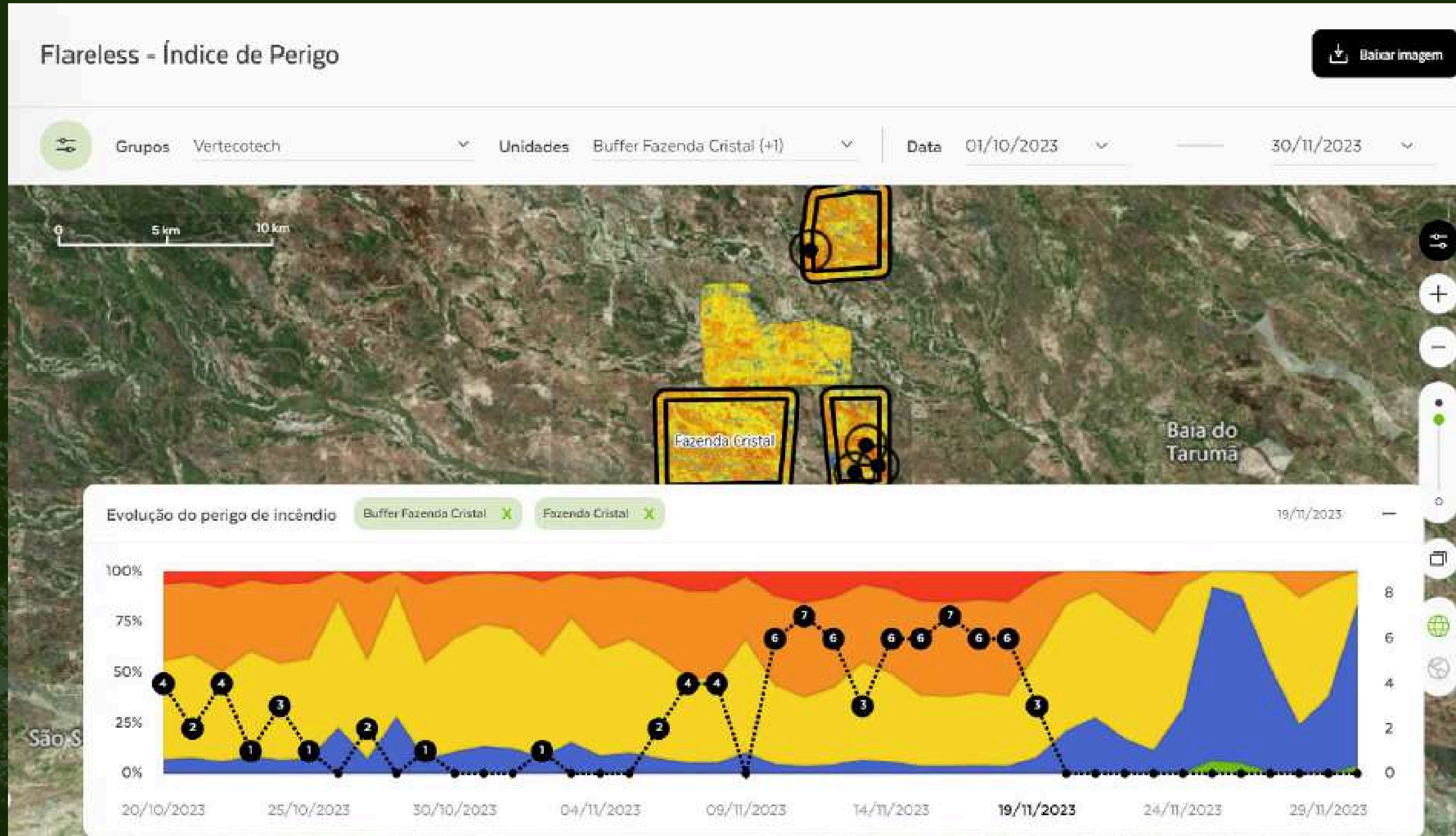
Local fire prevention measures



## Remote monitoring - fire and deforestation



## Remote monitoring - fire and deforestation

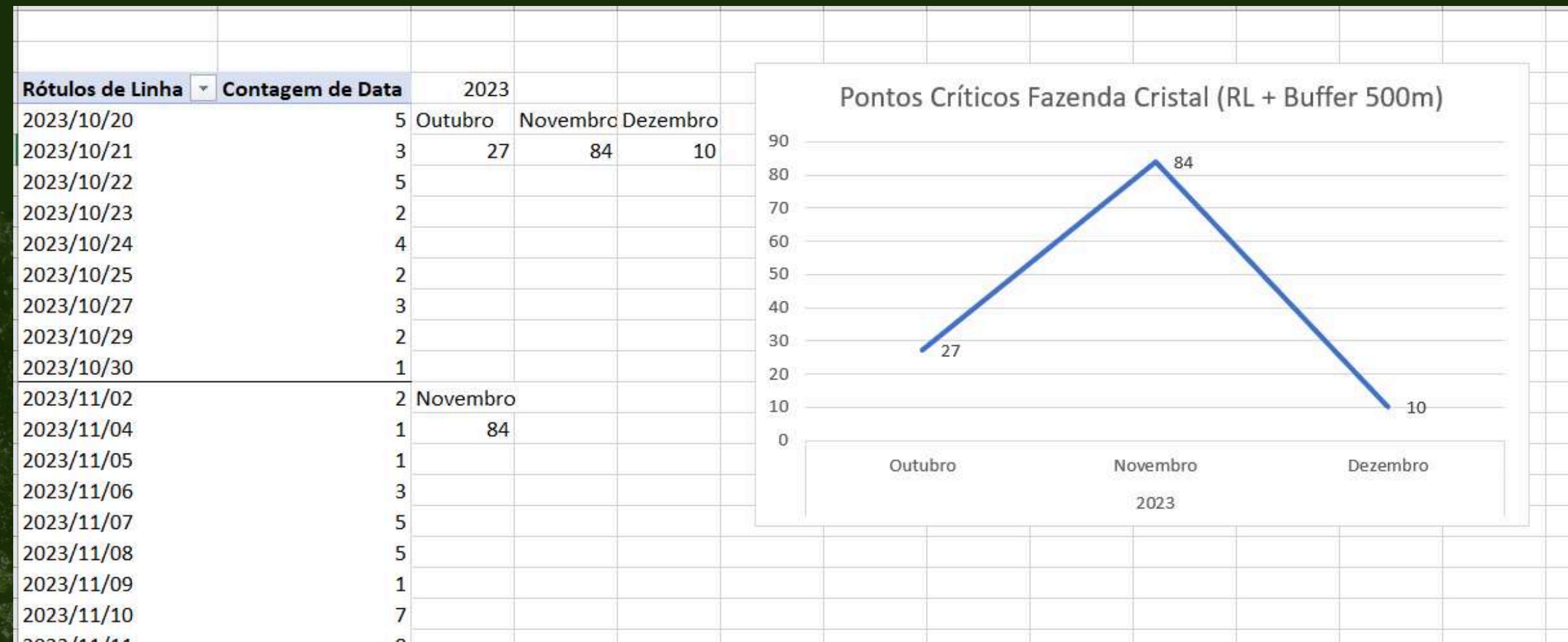
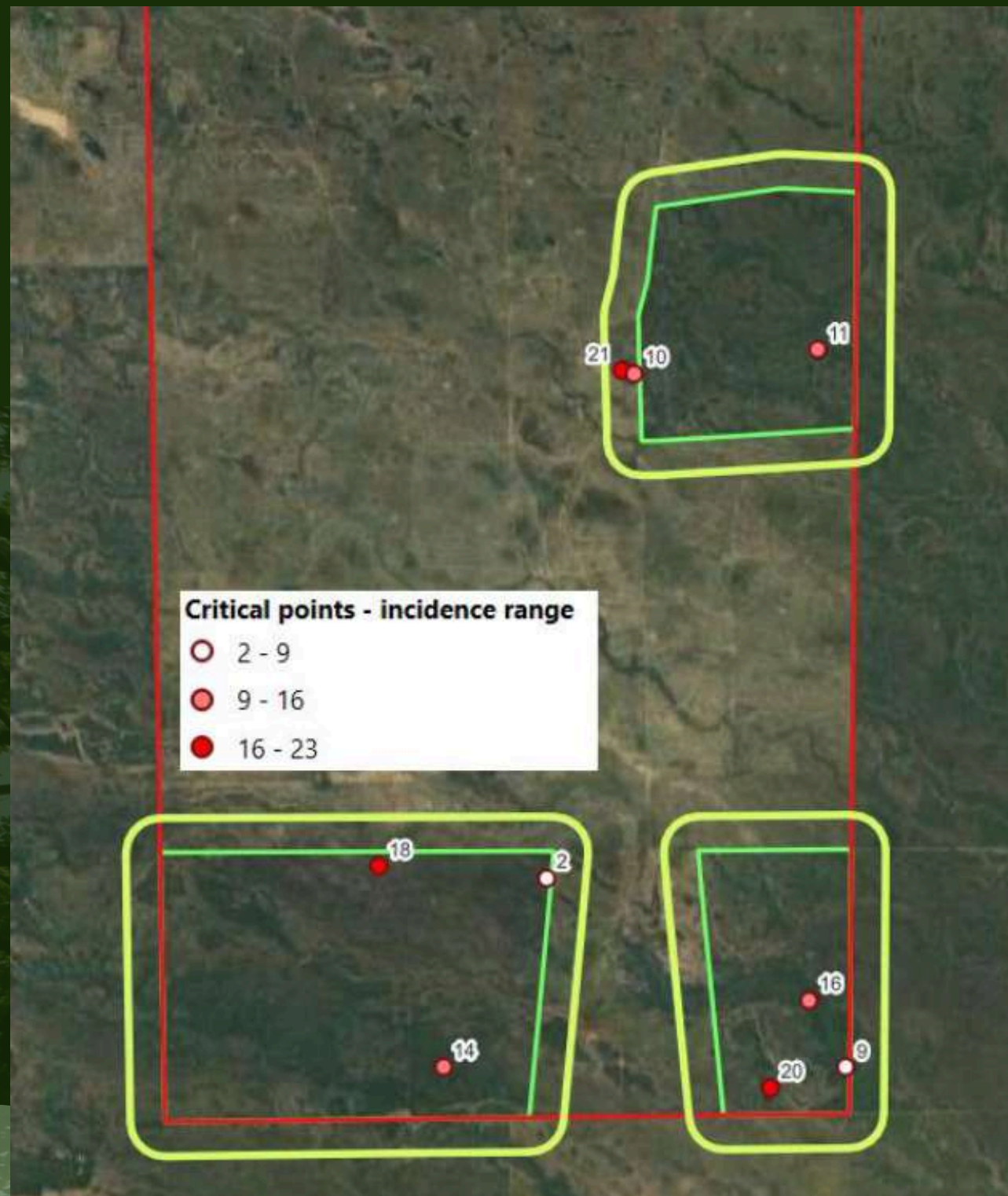


Remote monitoring - fire and deforestation



**Image 3.1-9:** Example of field verification of a critical point identified as “extreme” on the Quiron platform (Flareless) within the 500 meters buffer area from Legal Reserve (project area)

## Remote monitoring - fire and deforestation



## Emergency Attendance Plan - Fire and Deforestation



### **PLANO DE ATENDIMENTO A EMERGÊNCIAS – FOGO E DESMATAMENTO – FAZENDA CRISTAL**

#### 1. INTRODUÇÃO

Este documento trata dos procedimentos relacionados à prevenção, controle e mitigação de ocorrências nos âmbitos de fogos e queimadas nas áreas do projeto de conservação “Fazenda Cristal Conservation Project”, listado na plataforma WilderEarth em 2023 como projeto de créditos de carbono no âmbito do mercado voluntário de carbono, por meio da certificadora SocialCarbon. Este documento visa vigorar durante o monitoramento do projeto, com início em 2023, e está diretamente associado ao documento de análise de riscos do projeto “Fazenda Cristal Risk Management – Conservation Areas”, desenvolvido no âmbito da validação do projeto. Espera-se, com o andamento dos monitoramentos e ações, que o mesmo venha a ser atualizado no sentido de aprimoramento de medidas preventivas, de controle e mitigação de eventos de fogo e desmatamento nas áreas do projeto.

As medidas propostas neste documento visam alinhar-se ao Plano Estadual (MS) de Manejo Integrado do Fogo, instituído pelo Decreto Estadual 15.654/2021.

Biodiversity monitoring



Biodiversity monitoring



Biodiversity monitoring



CRISTAL2 90°F 32°C 08/23/2024 15:17:53



CRISTAL2 87°F 30°C 08/23/2024 16:00:22

Biodiversity monitoring





Biodiversity monitoring





# PROJECT ACTIVITIES

VERT ECOTECH

## Biodiversity monitoring

No	Popular Name	Scientific Name	Type	Origin	Extinction Risk (IUCN)	No	Popular Name	Scientific Name	Extinction Risk (IUCN)	Origin	Documented Register
1	Bocaiuva	<i>Acrocomia aculeata</i>	Tree	Native	Least concern	1	Anta	<i>Tapirus terrestris</i>	Vulnerable	Native	X
2	Rabo-de-burro	<i>Andropogon bicornis</i>	Grass	Native	N/a	2	Anu-preto	<i>Crotophaga ani</i>	Least concern	Native	
3	Gonçalo-alves	<i>Astronium fraxinifolium</i>	Tree	Native	Least concern	3	Arara-azul	<i>Aradornyrhynchus bucconothicus</i>	Vulnerable	Native	
4	Acuri	<i>Attalea phalerata</i>	Tree	Native	Least concern	4	Arara-vermelha	<i>Ara chloropterus</i>	Least concern	Native	
5	Capim-mimoso	<i>Axonopus purpusii</i>	Grass	Native	N/a	5	Aratinga de testa azul	<i>Thectocercus acuticaudatus</i>	Least concern	Native	X
6	Pata-de-vaca	<i>Bauhinia farficata</i>	Tree	Native	N/a	6	Bem-te-vi	<i>Pitangus sulphuratus</i>	Least concern	Native	X
7	Umidícola	<i>Brachiaria humidicola</i>	Grass	Exotic	N/a	7	Bentevizinho do brejo	<i>Philohydor lictor</i>	Least concern	Native	X
8	Gravatá	<i>Bromelia pinguan</i>	Herbacea	Native	N/a	8	Biguá	<i>Nannopterum brasilianum</i>	N/a	Native	X
9	Murici-do-cerrado	<i>Byrsonima cydoniifolia</i>	Shrub	Native	N/a	9	Cabeça-seca	<i>Mycteria americana</i>	Least concern	Native	X
10	Canjiqueira	<i>Byrsonima orbignyana</i>	Shrub	Native	N/a	10	Capivara	<i>Hydrochoerus hydrochaeris</i>	Least concern	Native	X
11	Pequizeiro	<i>Caryocar brasiliense</i>	Tree	Native	Least concern	11	Carcará	<i>Caracara plancus</i>	Least concern	Native	X
12	Embaúba	<i>Cecropia pachystachya</i>	Tree	Native	N/a	12	Caturrita	<i>Myiopsitta monachus</i>	Least concern	Native	X
13	Cedro	<i>Cedrela fissilis</i>	Tree	Native	Vulnerable	13	Colhereiro	<i>Platalea ajaja</i>	Least concern	Native	X
14	Barriguda	<i>Ceiba speciosa</i>	Tree	Native	Least concern	14	Coruja-buraqueira	<i>Athene cunicularia</i>	Least concern	Native	X
15	Copaíba	<i>Copaifera langsdorffii</i>	Tree	Native	Least concern	15	Curica	<i>Amazona amazonica</i>	Least concern	Native	X
16	Carandá	<i>Copernicia alba</i>	Tree	Native	Least concern	16	Curicaca	<i>Theristicus caudatus</i>	Least concern	Native	X
17	Pateiro	<i>Couepia uiti</i>	Tree	Native	N/a	17	Curutié	<i>Certhiaxis cinnamomeus</i>	Least concern	Native	X
18	Melão do campo	<i>Cucumis anguria</i>	Herbacea	Exotic	N/a	18	Ema	<i>Rhea americana</i>	Near threatened	Native	X
19	Lixeira	<i>Curatella americana</i>	Tree	Native	Least concern	19	Garça-moura	<i>Ardea cocoi</i>	Least concern	Native	
20	Jacarandazinho	<i>Dalbergia miscolobium</i>	Tree	Native	N/a	20	Gato-do-mato-pequeno	<i>Leopardus guttulus</i>	Vulnerable	Native	
21	Cambaru	<i>Dipteryx polyphylla</i>	Tree	Native	Near threatened	21	Gavião-belo	<i>Busarellus nigricollis</i>	Least concern	Native	X
22	Cortiça	<i>Discolobium pulchellum</i>	Shrub	Native	N/a	22	Iguana	<i>Iguana iguana</i>	Least concern	Native	
23	Chapéu-de-couro-folha-fina	<i>Echinodorus paniculatus</i>	Herbacea	Native	N/a	23	Jacaré-do-pantanal	<i>Caiman yacare</i>	Least concern	Native	X
24	Carona	<i>Elyonurus muticus</i>	Grass	Native	N/a	24	Jaguatirica	<i>Leopardus pardalis</i>	Least concern	Native	
25	Ipê-amarelo	<i>Handroanthus chrysotrichus</i>	Tree	Native	Least concern	25	Japó	<i>Phacellodomus ruber</i>	Least concern	Native	X
26	Ipê-roxo	<i>Handroanthus impetiginosus</i>	Tree	Native	Least concern	26	Jararaca-da-mata	<i>Bothrops jararaca</i>	Least concern	Native	
27	Capim-canarana	<i>Hymenacrium amplexicaulis</i>	Grass	Native	Least concern	27	Jararacuçu	<i>Bothrops jararacussu</i>	Least concern	Native	
28	Capim-de-Capivara	<i>Hymenacrium amplexicaulis</i>	Grass	Native	Least concern	28	Marreca-ananaí	<i>Amazonetta brasiliensis</i>	Least concern	Native	
29	Jatobá	<i>Hymenaea sp.</i>	Tree	Native	N/a	29	Mutum-de-penacho	<i>Crax fasciolata</i>	Vulnerable	Native	
30	Jatobá-do-cerrado	<i>Hymenaea stigonocarpa</i>	Tree	Native	N/a	30	Onça-parda	<i>Puma concolor</i>	Least concern	Native	
31	Algodão-Bravo	<i>Ipomoea carnea</i>	Shrub	Exotic	N/a	31	Periquito de encontro amarelo	<i>Brotogeris chiriri</i>	Least concern	Native	X
						32	Pitiguari	<i>Cyclarhis gujanensis</i>	Least concern	Native	X
						33	Reco-manteira	<i>Suaeda frutescens</i>	Least concern	Exotic	X

## Biodiversity monitoring

No	Popular Name	Scientific Name	Type	Origin	Extinction Risk (IUCN)
13	Cedro	<i>Cedrela fissilis</i>	Tree	Native	Vulnerable
21	Cambaru	<i>Dipteryx polyphylla</i>	Tree	Native	Near threatened
<i>Source: technical visits 2023, technical sightings, site local sighting surveys, literature</i>					

No	Popular Name	Scientific Name	Extinction Risk (IUCN)	Origin	Documented Register
1	Anta	<i>Tapirus terrestris</i>	Vulnerable	Native	X
3	Arara-azul	<i>Aratinga canicularis</i>	Vulnerable	Native	
18	Ema	<i>Rhea americana</i>	Near threatened	Native	X
20	Gato-do-mato-pequeno	<i>Leopardus guttulus</i>	Vulnerable	Native	
29	Mutum-de-penacho	<i>Crax fasciolata</i>	Vulnerable	Native	
35	Queixada	<i>Tayassu pecari</i>	Vulnerable	Native	X
37	Raposa-do-campo	<i>Lycalopex vetulus</i>	Near threatened	Native	
40	Tamanduá-bandeira	<i>Myrmecophaga tridactyla</i>	Vulnerable	Native	
44	Veado-campeiro	<i>Ozotoceros bezoarticus</i>	Near threatened	Native	X
<i>Source: technical visits 2023, technical sightings, site local sighting surveys, literature</i>					



# PROJECT SAFEGUARDS

VERT ECOTECH

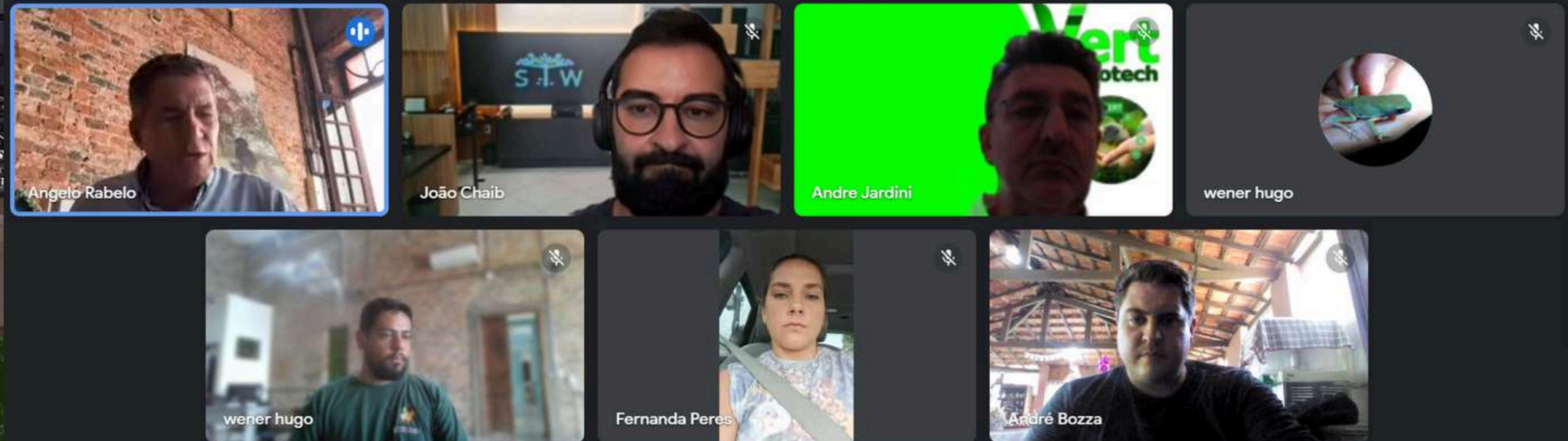
CRITERION	DESCRIPTION
Human Rights	Respect human rights and avoid discrimination.
Gender Equality	Ensure fair treatment between men and women.
Health and Safety	Must not pose risks to the health of the community and workers.
Land Tenure	The project must have legal rights over the area and respect its impacts.
Indigenous Peoples	Respect the rights of indigenous peoples over their lands.
Corruption	Must not be involved in any form of corruption.
Labour Rights	No forced or child labour, must comply with labour laws.
Financial Sustainability	Must ensure sufficient resources for financial maintenance.
Climate	Must not increase gas emissions beyond the permitted levels.
Natural Resources	Protect water, soil, and maintain biodiversity.
Pollution	Avoid pollution and implement measures to control impacts.

STAKEHOLDER	DESCRIPTION
Insuela Pereira e Conti Investimentos e Participações S/A (IPC)	Owner of Fazenda Cristal, responsible for managing the area.
Employees of Fazenda Cristal	Employees involved in daily operations and project execution.
NGO Instituto Homem Pantaneiro	NGO engaged in environmental conservation and monitoring in the Pantanal.
SEMADESC (State Secretariat for the Environment of MS)	State body responsible for environmental management in Mato Grosso do Sul.
Federal University of Mato Grosso do Sul (UFMS)	University involved in environmental research and scientific partnerships.
Fire Department of Mato Grosso do Sul	Institution responsible for firefighting and prevention actions.



# STAKEHOLDERS

VERT ECOTECH



Português (Br)

A Angelo Rabelo  
logicamente nós estamos trabalhando com outras possibilidades também que tá muito interessante que se chama saberes Pantaneiro que é trazer para os mais jovens questões, como tocar o berrante fazer laço coisas que são significativas para possibilidade

Projeto Cristal



Community - Local Stakeholders



# Community - Local Stakeholders

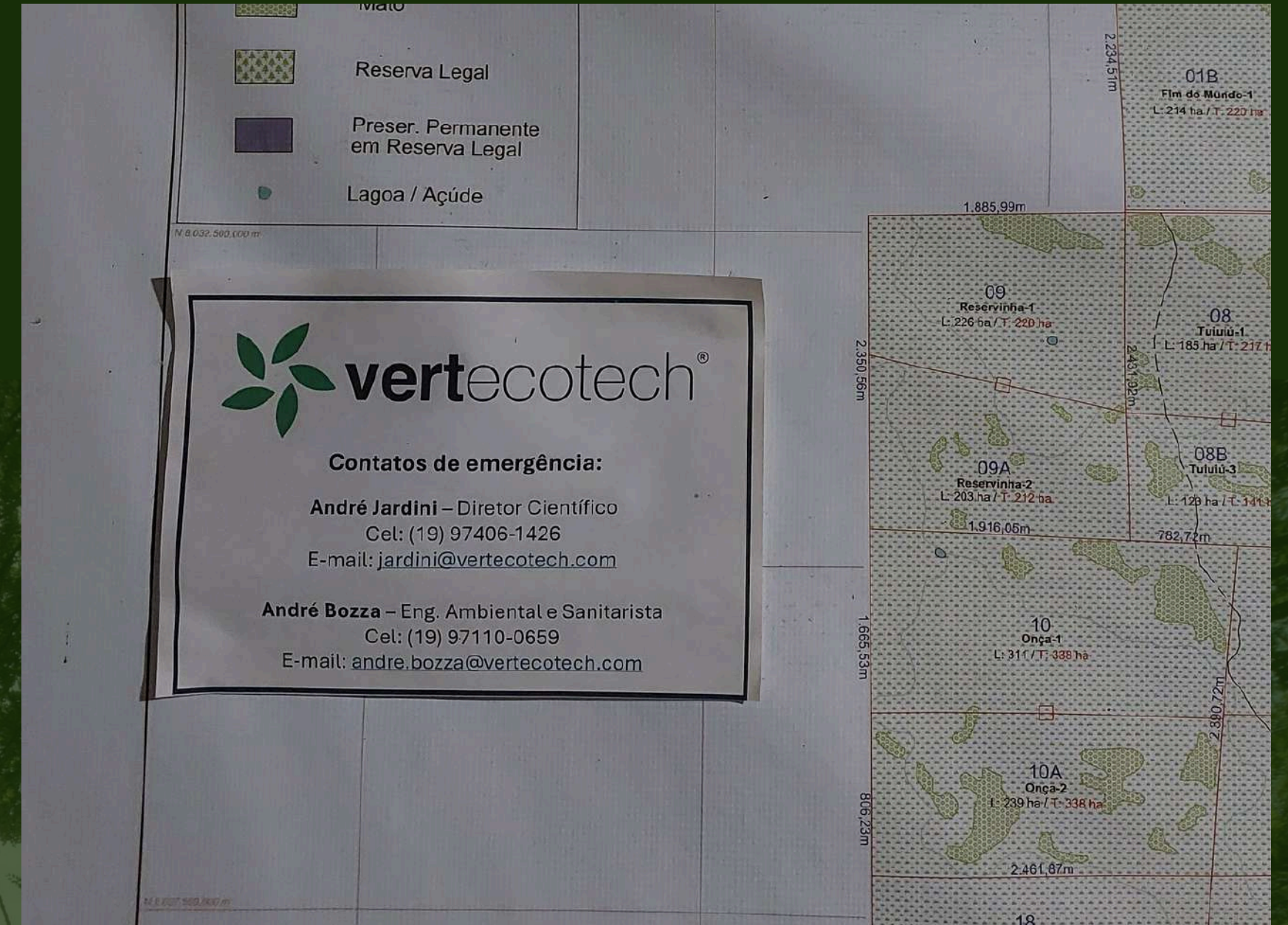




# STAKEHOLDERS

VERT ECOTECH

## Communication Channels / Grievance



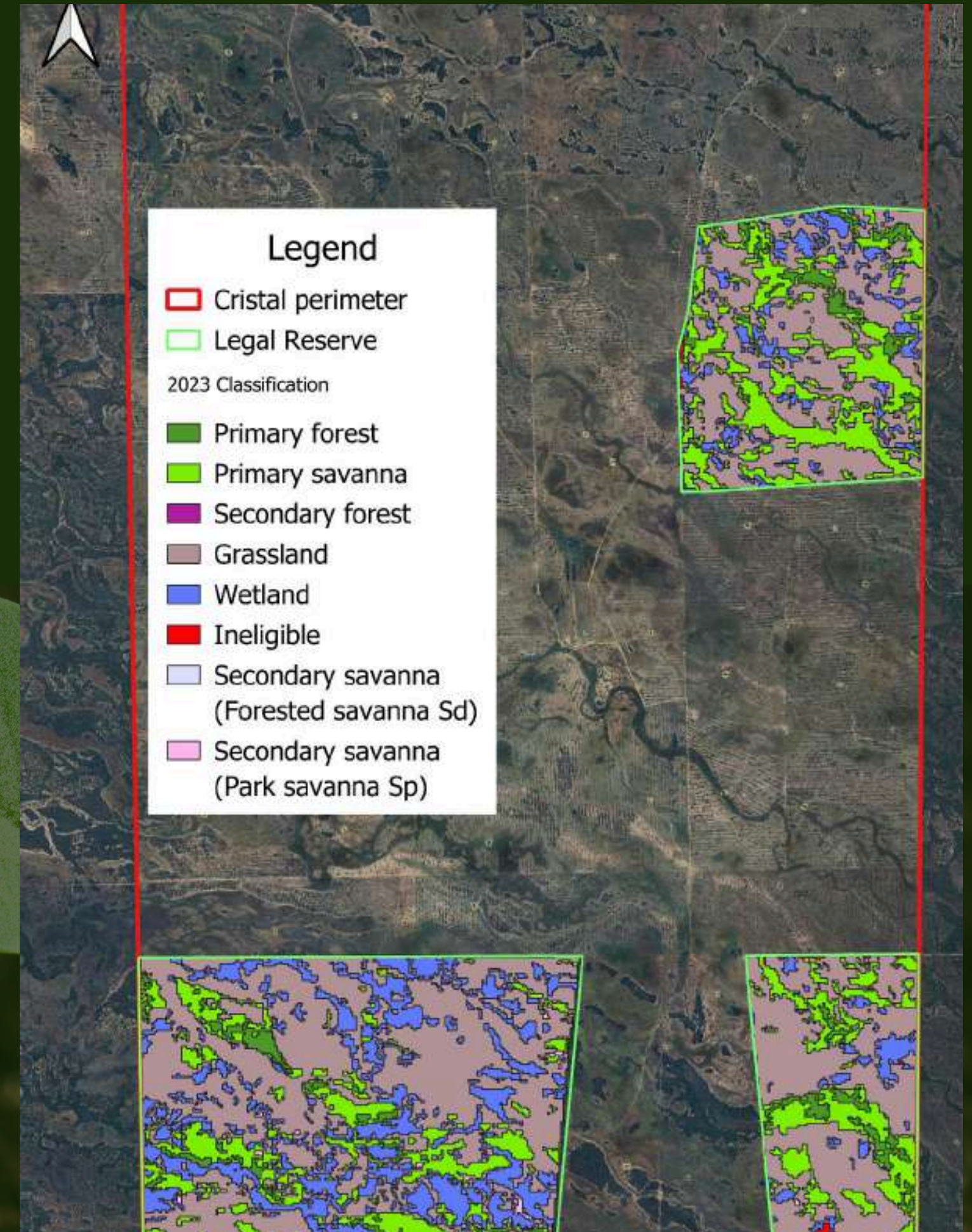


# CARBON QUANTIFICATION

VERT ECOTECH

Vegetation class	AI <sup>c</sup> (tC/ha)	A (ha)	RV <sub>2023</sub> (ton CO <sub>2</sub> e/year)
Pantanal primary forest formation	0.20	143.51	105
Pantanal secondary forest formation	2.77	0.68	6
Pantanal primary savanna formation	0.20	851.16	624
Pantanal secondary savanna formation (Forested Savanna)	1.69	9.69	60
Pantanal secondary savanna formation (Park Savanna)	0.49	34.10	61
Pantanal wetland	0.00	645.53	0
Pantanal grassland formation	0.10*	2,248.95	824
<b>PR<sub>2023</sub>**</b>			<b>1,680</b>

\*Belowground exceptionally  
 \*\*Not considering NPR buffer discount.





# CARBON QUANTIFICATION

VERT ECOTECH

Year	Baseline emissions or removals (tCO <sub>2</sub> e)	Project emissions or removals (tCO <sub>2</sub> e)	Leakage emissions (tCO <sub>2</sub> e)	Net GHG emission reductions or removals (tCO <sub>2</sub> e)	Buffer allocation (tCO <sub>2</sub> e)	SCUs eligible for Issuance
2020 (16-May to 31-December)	0	972	0	972	97	875
2021	0	1,788	0	1,788	179	1,609
2022	0	1,512	0	1,512	151	1,361
2023	0	1,680	0	1,680	168	1,512
<b>Total</b>	<b>0</b>	<b>5,952</b>	<b>0</b>	<b>5,952</b>	<b>595</b>	<b>5,357</b>



# PROJECT INDICATORS

VERT ECOTECH

ASPECT	INDICATOR
Social	S-002 Communication with Stakeholders
Social	S-007 Assistance to Indigenous/Traditional Populations
Social	S-012 Social Impact
Social	S-014 Social Research
Social	S-019 Inclusion of Women
Human	H-004 Education and Community Training
Human	H-008 Equipment and Infrastructure
Human	H-010 Community Health
Human	H-011 Worker Health and Safety
Human	H-022 Research Incentive
Financial	F-003 Alternative Income Sources
Financial	F-006 Competitive Advantage
Financial	F-008 Economic Viability
Natural	N-009 Farm Environmental Compliance
Natural	N-010 Environmental Impacts
Natural	N-016 Monitoring Methods
Biodiversity	B-003 Biodiversity Monitoring
Biodiversity	B-004 Biodiversity Research
Biodiversity	B-006 Local Information on Fauna & Flora
Carbon	C-003 Alignment with UN SDGs
Carbon	C-004 Impact Communication Strategies
Carbon	C-008 Project Performance



VERT ECOTECH

# PROJECT INDICATORS

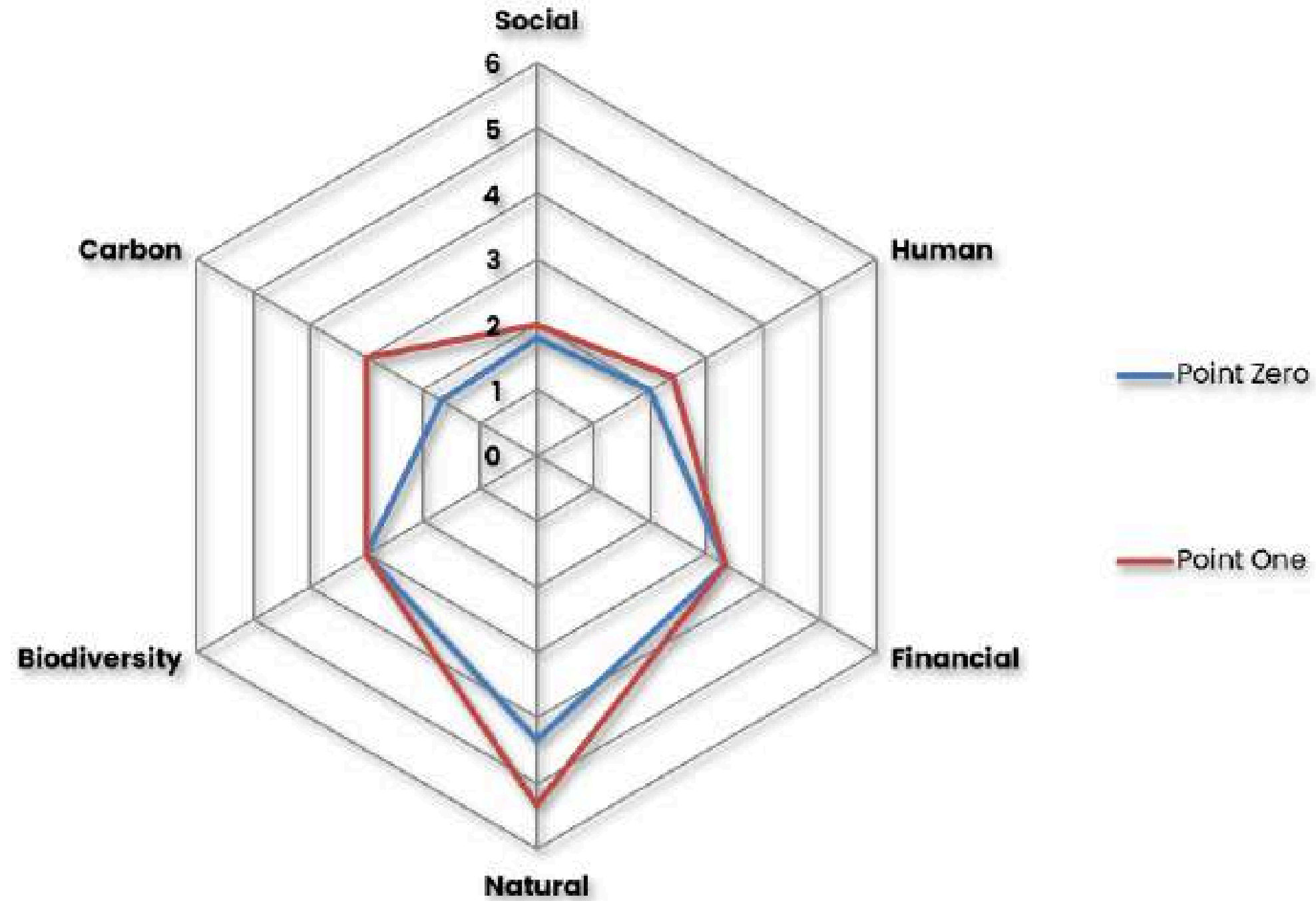
<b>Indicator</b>	B-003 Biodiversity monitoring				
<b>Description</b>	Reports, studies, documents, communication with project proponent, among others. Contact must be developed with VERT Ecotech S/A in order to understand the most recent situations and updates about any kind of fauna monitoring in the project areas, also to collect and check each document related to this theme				
<b>Situation</b>	A fauna and flora characterisation was carried out in 2023 to update the biodiversity characterisation carried out for the project design, also including the origin of species (native or exotic) and conservation status (IUCN) for better comprehension of conducts.				
There is no process of identification and monitoring of fauna and flora, nor cataloguing of timber.	There are plans to implement identification and monitoring of fauna and flora.	There is monitoring and identification of fauna OR flora.	<b>There is monitoring and identification of fauna AND flora annually.</b>	In addition to the previous scenario, there is botanical collection of flora and herbarium.	In addition to the previous scenario, there is a catalogue of identified woods (e.g. xiloteca).
<b>Score</b>	4				
<b>Prospects</b>	Biodiversity is expected to gradually reveal itself to be of better quality/quantity with project within years, reaching precise catalogues.				
<b>SDG Contributions</b>	15 – Life on Land				
<b>Rationale</b>	The conservation of native vegetation areas, which may lead into to a maintenance or increase in biodiversity, implies into halt of biodiversity loss.				

<b>Indicator</b>	H-004 Community education and training					
<b>Description</b>	Evaluates the relevant education and training programs related to the project, including additional programs to the stakeholders and broader community. The following major areas are considered: - Training: technical; IT and digital; courses, etc. - Education: basic and supplementary, environmental awareness-raising, etc.					
<b>Situation</b>	According to Fazenda Cristal's manager, there is a strong environmental awareness and education regarding the prevention of resources, waste, energy, etc., which is conveyed through its management to the residents and community of the farm. However, no training, awareness or environmental education related to conservation of native areas of the property.					
The project does not offer any education and training activities.	<b>The project offers only one education or training activity.</b>	The project offers two education or training activities.	The project offers three education or training activities.	The project offers four education or training activities.	The project offers more than four education or training activities.	
<b>Score</b>	2					
<b>Prospects</b>	Increasing employees and community's environmental conscience about conservation of native vegetation areas and related themes					
<b>SDG Contributions</b>	13 – Climate Action					
<b>Rationale</b>	By increasing community and employee's environmental conscience, this project offers an opportunity for people to think about each common action related to their biome and to native vegetation, which may approach them to relevant attitudes regarding climate change.					



VERT ECOTECH

# PROJECT INDICATORS

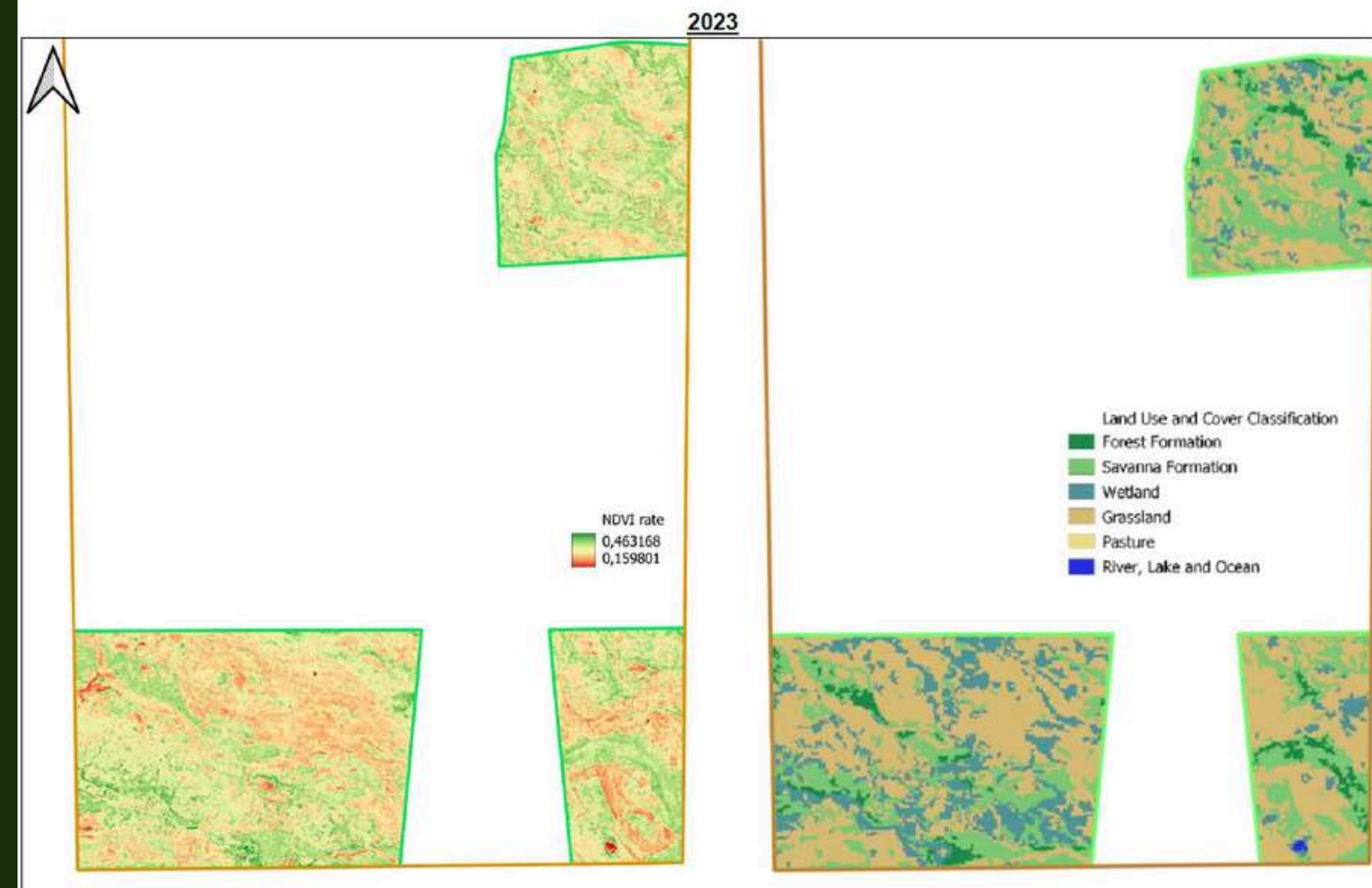
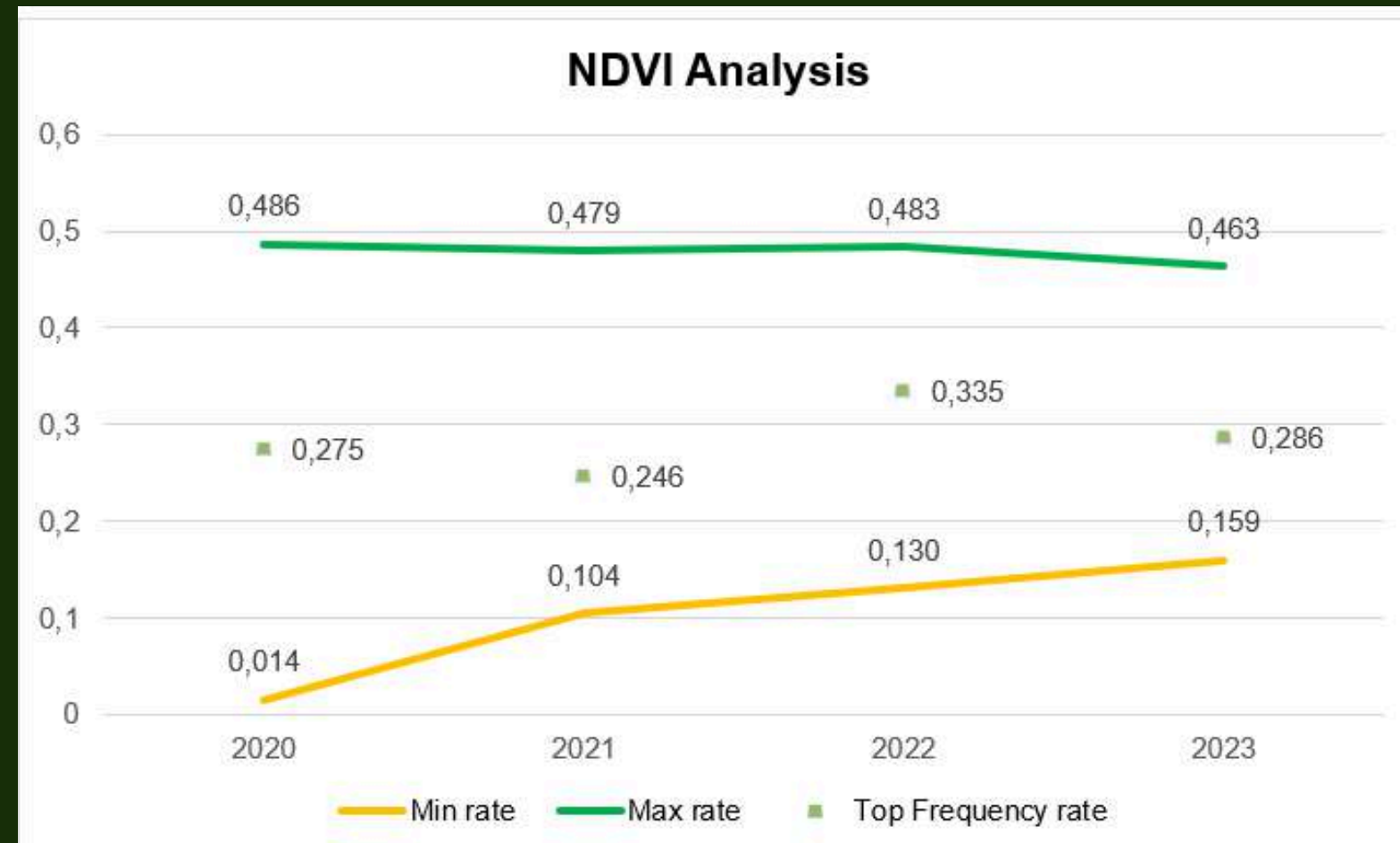




VERT ECOTECH

# RELEVANT FINDINGS

N-010



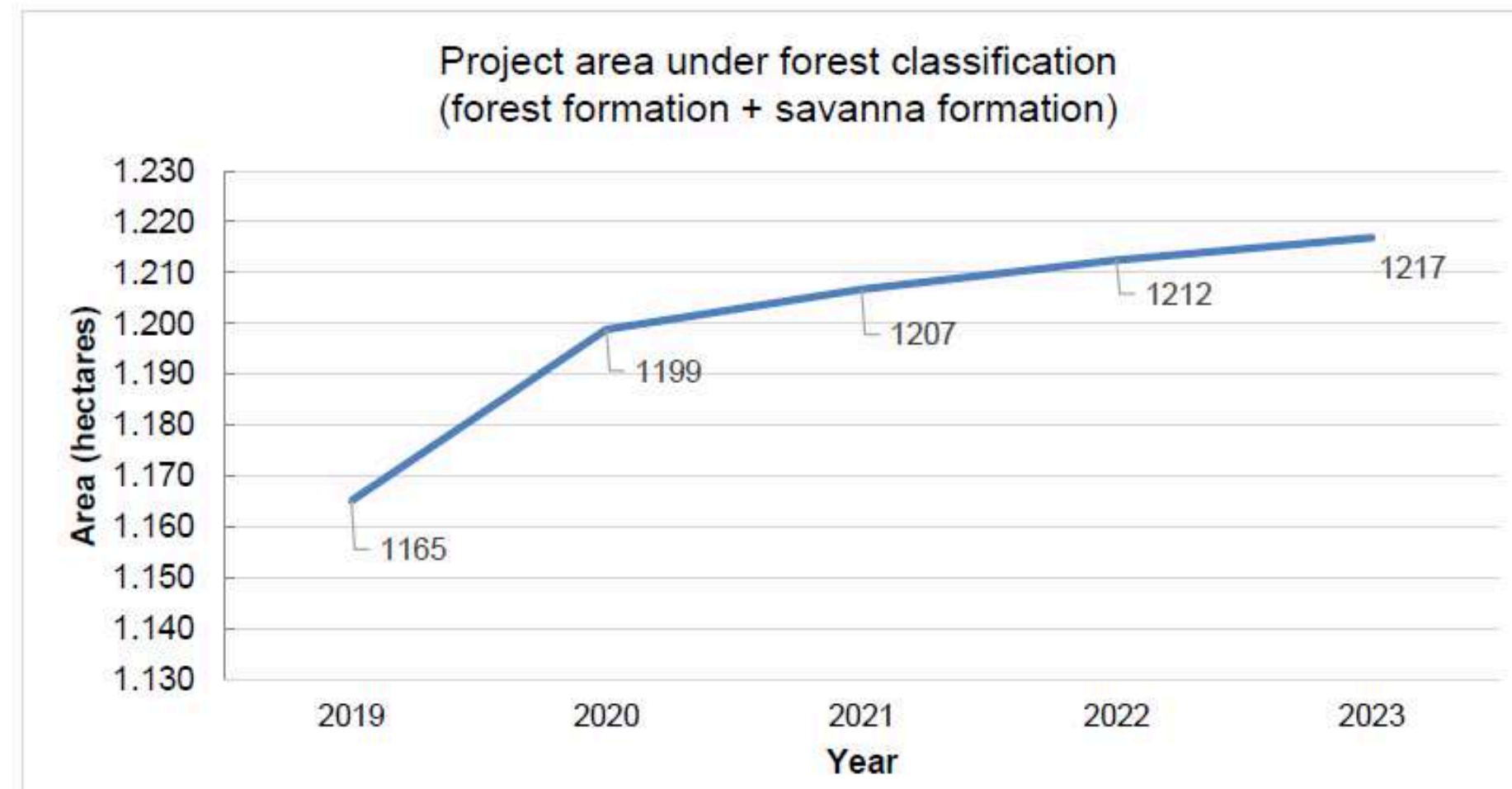


VERT ECOTECH

# RELEVANT FINDINGS

N-010

Year	Forest classification (forest formation + savanna formation) - hectares	% Compared to previous year
2019	1165,21	-
2020	1198,86	2,9%
2021	1206,70	0,7%
2022	1212,48	0,5%
2023	1216,86	0,4%





VERT ECOTECH

# RELEVANT FINDINGS

N-010





VERT ECOTECH

# RELEVANT FINDINGS

H-010 / H-008





VERT ECOTECH

# RELEVANT FINDINGS

B-006



Scientific Name	Type	Origin	Extinction Risk (IUCN)
<i>Acrocomia aculeata</i>	Tree	Native	Least concern
<i>Andropogon bicornis</i>	Grass	Native	N/a
<i>Astronium fraxinifolium</i>	Tree	Native	Least concern
<i>Attalea phalerata</i>	Tree	Native	Least concern
<i>Axonopus purpusii</i>	Grass	Native	N/a
<i>Bauhinia farficata</i>	Tree	Native	N/a
<i>Brachiaria humidicola</i>	Grass	Exotic	N/a
<i>Bromelia pinguan</i>	Herbacea	Native	N/a
<i>Byrsonima cydoniifolia</i>	Shrub	Native	N/a
<i>Byrsonima orbignyana</i>	Shrub	Native	N/a
<i>Caryocar brasiliense</i>	Tree	Native	Least concern
<i>Cecropia pachystachya</i>	Tree	Native	N/a
<i>Cedrela fissilis</i>	Tree	Native	Vulnerable
<i>Ceiba speciosa</i>	Tree	Native	Least concern
<i>Copaifera langsdorffii</i>	Tree	Native	Least concern
<i>Copernicia alba</i>	Tree	Native	Least concern
<i>Couepia uiti</i>	Tree	Native	N/a
<i>Cucumis anguria</i>	Herbacea	Exotic	N/a
<i>Curatella americana</i>	Tree	Native	Least concern
<i>Dalbergia miscolobium</i>	Tree	Native	N/a
<i>Dipteryx polyphylla</i>	Tree	Native	Near threatened
<i>Discolobium pulchellum</i>	Shrub	Native	N/a
<i>Echinodorus paniculatus</i>	Herbacea	Native	N/a
<i>Elyonurus muticus</i>	Grass	Native	N/a
<i>Handroanthus chrysotrichus</i>	Tree	Native	Least concern



# PROJECT VALIDATION AND VERIFICATION



SOCIALCARBON®

<https://icroa.org/standard-endorsement/>

<https://www.socialcarbon.org/>

<https://kbscertification.com/>





UNFCCC Google Search

About CDM

Governance

- Executive Board
- Panels and Teams
- National Authorities
- Validators and Verifiers

Rules and Reference

Methodologies

Standardized Baselines

Activity Search

CDM Registry

Stakeholder Interaction

Newsroom

Issues Quickfinder:

Please choose

Offset now: visit the [United Nations Carbon Offset Platform](#)

Connect with us:



## List of DOEs

The Executive Board, in accordance with [paragraph 20 of the CDM modalities and procedures](#), shall maintain a publicly available list of designated operational entities. The table below provides the list of accredited and provisionally designated operational entities for validation functions. These entities are accredited for the sectoral scopes shown below in the table and qualify to submit requests for project registration in these sectoral scopes.

[Methodologies linked to sectoral scopes](#)

Ref. Number	Entity	Sectoral scopes for validation	Sectoral scopes for verification and certification
E-0001	<a href="#">Japan Quality Assurance Organisation (JQA)</a>	1, 3, 4, 13, 14	1, 3, 4, 13, 14
E-0005	<a href="#">TÜV SÜD South Asia Private Limited (TÜV SÜD)</a>	1, 3-5, 7, 10, 13-15	1, 3-5, 7, 10, 13-15
E-0006	<a href="#">Deloitte Tohmatsu Sustainability, Co., Ltd. (DTSUS)</a>	1-3, 5, 10, 12, 13, 15	1-3, 5, 10, 12, 13, 15
E-0009	<a href="#">Bureau Veritas India Pvt. Ltd. (BVI)</a>	1-5, 7-10, 12-15	1-5, 7-10, 12-15
E-0021	<a href="#">AENOR INTERNACIONAL, S.A.U. (AENOR)</a>	1-15	1-15
E-0022	<a href="#">TÜV NORD CERT GmbH (TÜV NORD)</a>	1-16	1-16
E-0025	<a href="#">Korean Foundation for Quality (KFQ)</a>	1-5, 9, 11, 13, 15	1-5, 9, 11, 13, 15
E-0032	<a href="#">LGAI Technological Center, S.A. (LGA Tech. Center S.A)</a>	1, 3, 13	1, 3, 13
E-0034	<a href="#">China Environmental United Certification Center Co., Ltd. (CEC)</a>	1-15	1-15
E-0037	<a href="#">RINA Services S.p.A. (RINA)</a>	1-7, 9-11, 13-15	1-7, 9-11, 13-15
E-0039	<a href="#">Korean Standards Association (KSA)</a>	1-5, 9, 10, 13-15	1-5, 9, 10, 13-15
E-0044	<a href="#">China Quality Certification Centre Co., Ltd. (CQC)</a>	1-15	1-15
E-0046	<a href="#">China Classification Society Certification Co., Ltd. (CCSC)</a>	1-10, 13-15	1-10, 13-15
E-0047	<a href="#">CEPREI certification body (CEPREI)</a>	1-5, 8-10, 13, 15	1-5, 8-10, 13, 15
E-0051	<a href="#">KBS Certification Services Limited (KBS)</a>	1-5, 7-10, 12-15	1-5, 7-10, 12-15
E-0052	<a href="#">Carbon Check (India) Private Ltd. (Carbon Check)</a>	1-5, 7-10, 13-16	1-5, 7-10, 13-16
E-0056	<a href="#">Korea Testing &amp; Research Institute (KTR)</a>	1, 3-5, 11, 13	1, 3-5, 11, 13



---

QUESTIONS ?

---

THANK YOU !



**vert**ecotech<sup>®</sup>

WWW.VERTECOTECH.IO